

规格参数

Product number	LC-A3 Heat Transfer Printer
Epson original nozzle	F1080-A1/13200-A1
Number of nozzles	2 sticks
Nozzle height	2mm-3mm
Nozzle cleaning	Fully automatic cleaning
Nozzle flash	With anti-blocking flash spray and automatic moisturizing function
Ink Type	Pigment ink (environmentally friendly eco-solvent ink, dye ink, dye sublimation ink)
ink color	K\C\M\Y + White
Ink cartridge capacity	500ml of each color
Ink supply method	Negative pressure continuous ink supply
print effective width	30 mm
type of medium	Thermal transfer pet film
Loadable coil weight	40 KG (below)
Delivery device	Standard
Heating system	Front, middle and rear embedded constant temperature synchronous heating control system
drying system	Powder shaker drying
operating language	Chinese English
operating system	Windows 10/Win7
print interface	1000M/ net port printing
RIP software	Maintop /PhotoPrint/Wasatch/Onyx
Power parameters	AC-220V, 50Hz/60Hz
Power (W)	Standby power 32W, maximum power 2300w
Machine Dimensions (L*W*H)	1000mm x 680mm x 500mm (L*W*H)
Machine Net Weight (Kg)	100Kg

Product number	A3 shake powder dryer
Media width	300mm
functional item	Powder shaking control, dusting control, curing temperature PID setting
Heating and drying function	Far infrared carbon fiber heating tube heating
Rewind function	Automatic induction winding
Electrical parameters	Rated electricity 220V , rated current 5A , rated power 800w
Machine size/weight	950x700x700mm / 45kg
Package size/weight	780x400x360mm/ 50kg

*The product specification and configuration are subject to the actual product, if there is any modification, it will not be notified.

National unified service hotline: 400-717-6789

Email: xs_wcx@locor.com.cn
 Website: <http://www.locor.com>



Official WeChat

locor 乐彩®



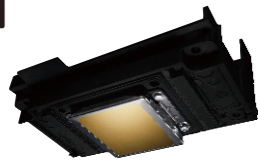
LC-A3 Heat Transfer Printer
 Epson original print head: F1080-A1 / 13200-A1 two-pack

郑州豫彩电子科技有限公司

Epson original print head printing speed

● Epson F1080-A1 speed color + white

MICRO PIEZO PRINTHEAD
powered by EPSON



sketch mode		18.6m ² /h
production mode		13.4m ² /h
quality mode		10.3m ² /h

● Epson 13200-A1 Speed color + white

PRECISION CORE
PRINTHEAD
powered by EPSON



sketch mode		24.9m ² /h
production mode		16.4m ² /h
quality mode		13.5m ² /h

Production process diagram



1 First make a layout on the computer



2 Printing Patterns with A3 Heat Press Machine



3 Powder - shake powder - drying and curing



4 Press onto the product with a press



5 Finished effect, optional materials are more extensive

Computer configuration requirements



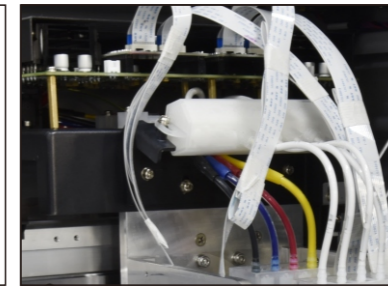
Win7 32bit/64bit OS
(Win7 32-bit systems below need to pre-install .net4.0)

CPU: Core i3 or above
Memory: 4G or above
Hard Disk: At least 120G fast (7200 RPM) hard disk.
Display: 17-inch flat-panel display, true color graphics card.
Support resolutions above 1024X768.

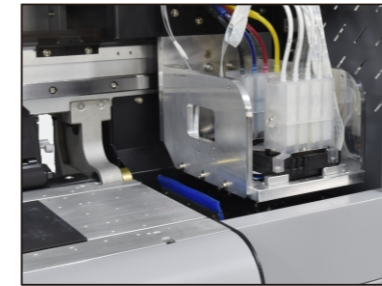
Intelligent operation printing and high-quality mechanical design



Guide Rails
Equip with silent guide rail makes the printing process more stable and little noise



White ink diverter
Better to ensure the white ink smooth



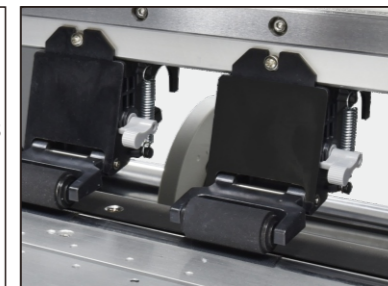
High quality aluminum plate carriage frame
Ensure printing of the print head more stable and Less noise



White Ink Stirrer
Prevent white ink from curing



One-piece emptying device fixing accessories
During the printing process the feeding is more stable



Pinch roller
Adjustable pinch rollers are more convenient to use

Market application introduction

